

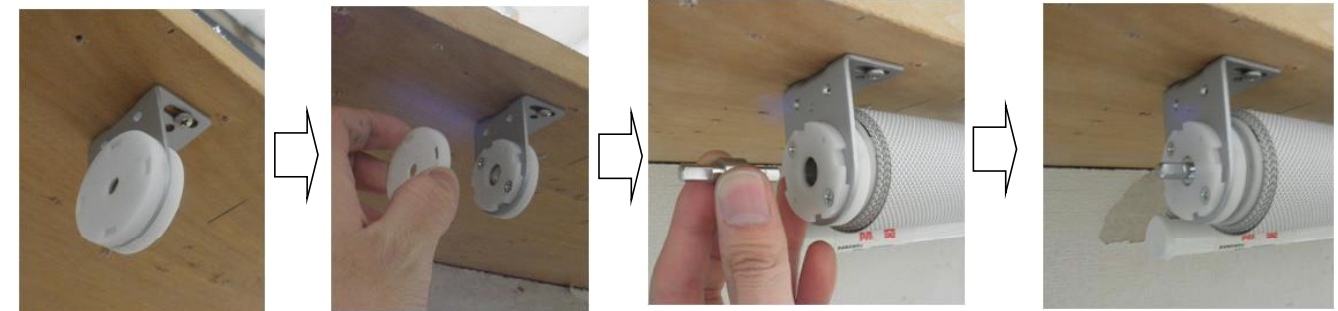
Installation manuals for Side bracket type



Position for

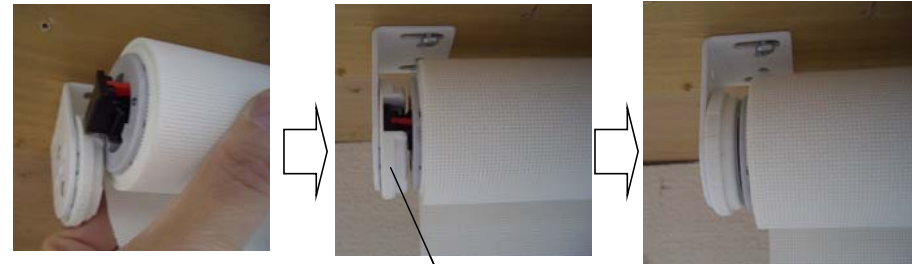
Not Link Type

Link Type

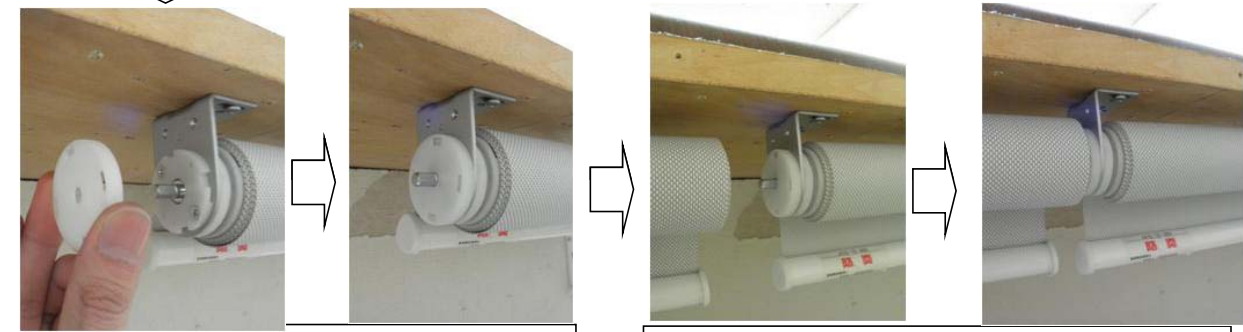


<Link Bracket>
Unscrew the plastic cover opposite from

When install chain side screen, insert Link joint pin.



Turn the plastic



Screw the plastic cover

Install spring side screen. Both weight bars have to

Note

Both brackets have to be vertically installed. Less than 2 degrees.

Regarding Link Type, position difference between side bracket and Link bracket have to be less than 0.1 for product width vertically and horizontally.